

38-38

38

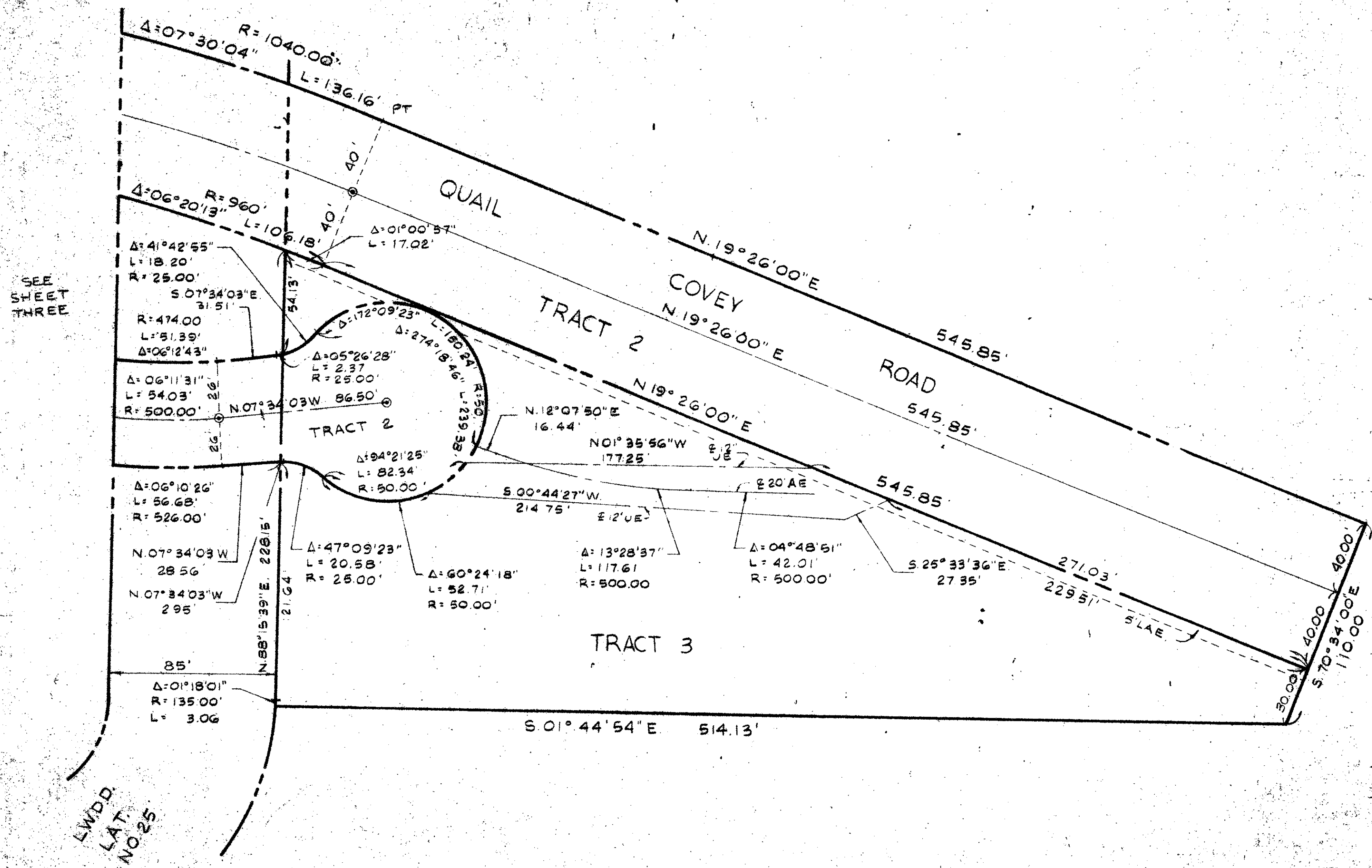
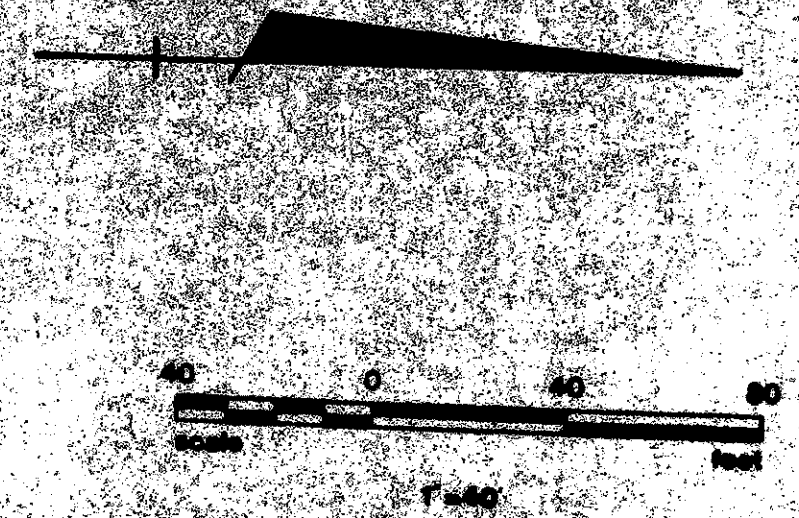
PLAT NO. 16 QUAIL RIDGE

(A PLANNED UNIT DEVELOPMENT)

IN SECTION 30 TOWNSHIP 45 SOUTH, RANGE 43 EAST
PALM BEACH COUNTY, FLORIDA, BEING A REPLAT OF
PORTIONS OF TRACTS 53, 54, 75, 76, 85 AND 86
PALM BEACH FARMS COMPANY PLAT NO. 8 SEC. 30
T-45-S, R-43-E PLAT BOOK 5 PAGE 73 AND OTHER LANDS

IN 4 SHEETS SHEET NO. 4

MOCK ROOS & SEARCY, INC.



SEE SHEET THREE

LWDD
LAT
NO. 25

58/38

1000-069

Quail Ridge #16